

comfort | brought to you by **Lutron® Shading Solutions**



2:30 pm: Afternoon sun makes it impossible to see your computer screen.



Glare reduced more than 80%.
SheerNature™ PVC-free solar fabric.

glare | comfort

Since 1961, Lutron® has led the way in lighting control. Lutron is proud to be the first choice of many of the world's foremost architects, engineers, lighting designers and installers.

With a touch of a button, lower Lutron shades to transform harsh glare into useable daylight. Intelligent drive technology coupled with the latest in solar fabrics reduces solar heat gain and saves energy.

Make your space more comfortable and your employees more productive.

For more information on Sivoia QED™ shading solutions, call Lutron at **800.523.9466** or visit us online at **www.lutron.com/SivoiaQED**

It's done! Smart Home
Time House
56b Crewys Road
London NW2 2AD
tel.: 0845 060 5566
www.itsdone-smarhome.co.uk



Sivoia QED™ shading solutions

 **LUTRON®**

effective daylight management

The National Institute of Occupational Safety & Health states that eyestrain is the number one cause of fatigue, errors, and loss of productivity at work. Excessive and uncontrolled daylight contributes to discomfort, heat build-up, and UV damage to interiors.

Interior daylight can be generated by direct sunlight, reflection from clouds, surrounding buildings, and/or light colored interior walls. Daylight management is the use of shading systems to regulate the penetration and intensity of natural light into a space.



Applying the proper shading system

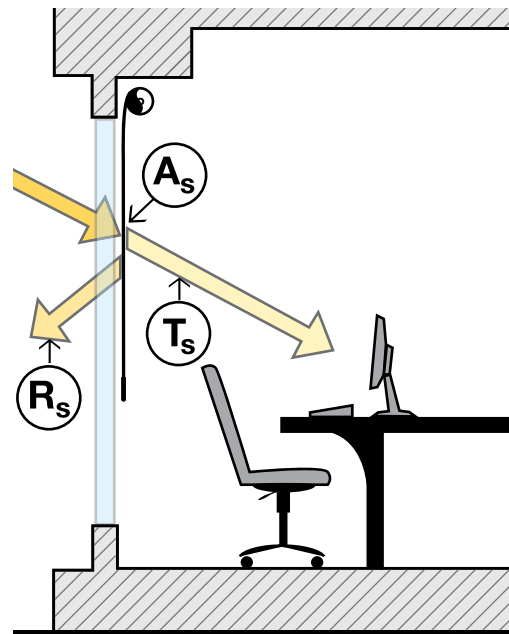
Controlling daylight requires a well-engineered shading system. The system consists of a controllable shade combined with the proper fabric for attenuating light penetration while preserving exterior views and controlling heat gain. Controllable shades allow a system to be automated and integrated into other building control systems.

Fabric selection is determined by evaluating the orientation of each elevation and the designer's objectives for the building's interior. Factors include the fabric's ability to absorb, transmit, and reflect solar energy.

For each fabric, $T_s + A_s + R_s = 100\%$ of solar radiation

Daylight control is optimized when applied in conjunction with electric lighting control, including dimming and switching systems.

For more information:
www.lutron.com/shadingsolutions/fabric_performance



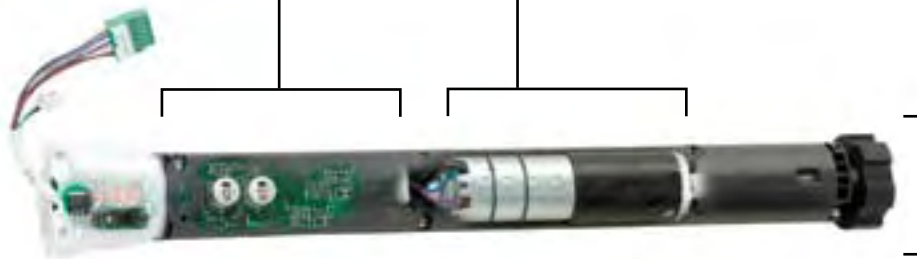
A_s = solar absorptance

T_s = solar transmittance

R_s = solar reflectance

Intelligent processor affords two-way communication for flexibility, programming, and integration with Lutron lighting controls

Precision motor and gear design ensures ultra-quiet operation and smooth, even movement



Sivoia QED roller shade electronic drive unit detail



Sivoia QED (quiet electronic drive) low-voltage systems feature Lutron's processor-based technology inside the roller tube. This, combined with a precision drive system, provides smooth movement, consistent bottom bar alignment among multiple shades, two-way communication between drives and outside systems, and ultra-quiet performance.

Lutron shading and lighting control solutions may contribute to obtaining up to 22 points in 5 of 6 LEED credit categories.



Sivoia QED system layout

Common components for a Sivoia QED roller shade system (not shown to scale)

Roller shades containing electronic drive units

Drapery track containing electronic drive units

Infrared remote (optional)



Keypads

Communication wiring

Low voltage communication and power wiring



Connects to additional power panels or HWI-Q96 HomeWorks® Interface

Power/Communications Panel (optional)

- Provides centralization for wiring of multiple electronic drive units (EDUs)
- Each panel provides power for up to 10 Sivoia QED EDUs
- Sivoia QED shades may also be powered by individual transformers

Roller shades

Sivoia QED roller shades offer ultra-quiet operation, uniform movement of multiple shades, minimal light gaps, and convenient one-touch control from elegant keypads and intuitive handheld remotes. The system can seamlessly integrate with Lutron® lighting controls to provide control of all the light in any space, or with other systems such as security or climate control to maximize the efficiency and versatility of any room or building.*

www.lutron.com/shadingsolutions/sivoia_roller



Coming in 2007: an exciting new line of manual roller shades

Roman shades

Sivoia QED Roman shades offer the same elegant movement and precise control as the roller shade family. They also feature the elegance of decorative pleats and flat or soft folds. Choose from a broad selection of natural woven woods and exclusive designer fabrics that have been selected to complement the Lutron Satin Colors™ line of dimmers and lighting controls.*

www.lutron.com/shadingsolutions/sivoia_romans



Draperies track systems

In addition to shades, the Sivoia QED line also includes drapery track systems for pinch-pleat and ripple fold drapery panels. The Sivoia QED track system offers all of the quiet, precise control of the Sivoia QED family including programmable stop points and simple, low-voltage installation. Straight and custom-curved tracks are available.

www.lutron.com/shadingsolutions/sivoia_drapery

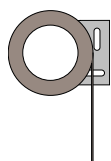


* Lutron also offers a full line of manually operated roller and roman shades to complete a project.

Roller shade solutions

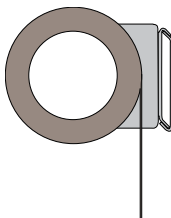
Engineered for elegant, precise performance

- Electronic drive unit located within roller tube
- Near-silent performance (44dbA at three feet)
- Built-in intelligence allows for flexible control of groups of shades without special wiring or external group controllers
- Multiple shades move precisely and evenly to programmable stop points where bottom bar alignment is maintained to within .125"
- Minimal, symmetrical light gaps (.75") between edge of fabric and window frame for optimum light control
- Elegant keypads with back-lit, engraved buttons available in a wide variety of colors and finishes



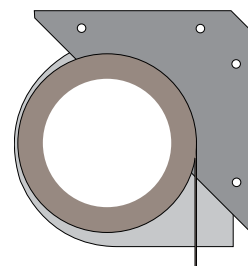
Roller 64™

Pocket size: 3.5" x 3.5"
Maximum shade size:
64 square feet



Roller 100™

Pocket size: 4.75" x 5"
Maximum shade size:
100 square feet



Roller 225™

Pocket size: 7" x 7"
Maximum shade size:
225 square feet

NEW! Sivoia QED drapery track

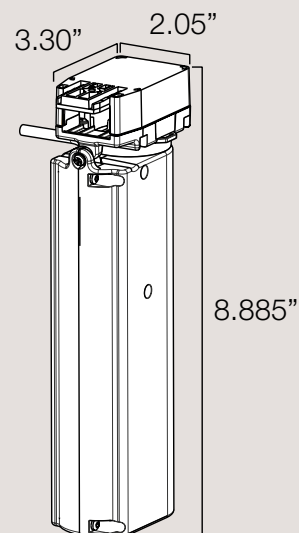
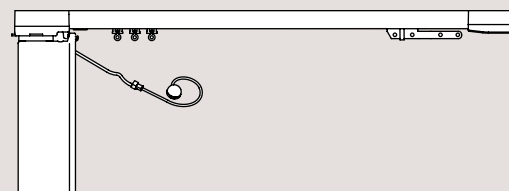
Mechanical benefits:

- 30% increase in torque
- Thin profile that complements the width of drapery track
- Drives existing track (straight, curved, split, ripplefold) with same length/radius rules
- Ultra-quiet operation
- Left/right mountable and field configurable drive unit

System features

- Programmable presets which are never lost
- Multi-location programming
- Ability to integrate seamlessly with other Sivoia QED products
- Infrared capability
- Simplified class 2 wiring / 24vac, 3A, 50/60Hz
- Same wiring connector and button/LED user interface as Sivoia QED roller shades

www.lutron.com/shadingsolutions/tech_refguide



The right fabric for each application

Maximize view

Lutron® SheerShades™ are made of a woven material that reduces glare and direct solar exposure without compromising the exterior view. They are available in a range of openness factors to complement different intensities of direct light.

Reduce heat gain

Many Lutron fabrics are designed to reflect as much solar radiation out and away from the window as possible to minimize the build-up of heat inside the building.

Blackout

When desired, 100% opaque fabrics are available for applications such as home theaters, bedrooms, or conference rooms. Sivoia QED systems can also provide side channels to ensure complete blackout.



Lutron® fabrics are grouped into four categories: **SheerShade™**, **SheerShade Designer™**, **Privacy™**, and **Blackout™**. These provide varying degrees of light control and functionality.



SheerShade fabrics feature open weaves, so sunlight is filtered while a view is preserved. These fabrics are measured by “openness factor,” which describes the ratio of open space to fabric yarn in a weave.

SheerShade Designer fabrics provide more decorative weave options, such as jacquards that resemble natural woven fabrics.



Privacy fabrics permit some light, but are not open weaves, so the view is limited to shapes and shadows.



Blackout fabrics prevent all light from passing through the material. These fabrics are often combined with special side channels, top treatments, and other system components to ensure a complete light seal.

To order a fabric selection binder, register to order at: www.lutron.com/binders

Elegant Lutron® seeTouch™ keypads complement any décor

Choose from several keypad styles and over 40 colors and finishes including metal. Sivoia QED™ keypads offer ergonomic, backlit buttons for easy viewing in a darkened room.

Integrate with Lutron lighting controls for total light control of electric light and daylight.

Easy to use remote controls

Easily control one shade or a whole group of shades with convenient handheld remote controls.



gloss finish



metal finish



satin finish



Color samples shown are representations only. Contact Lutron customer service to receive a sample of all of Lutron's keypad finishes.

**Total light control
Integration of Sivoia QED with
Lutron® lighting controls**

Lutron systems work easily together, providing two-way communication for control of all the light in any space. From a single room to whole-home or whole-building systems, you can simplify daily routines and create subtle or dramatic transitions for multi-media presentations, all at the touch of a button.



About Lutron®

Lutron has been the world's leading manufacturer of lighting control systems for over 40 years, continually innovating, while offering world-class service and support.

Ultra-quiet electronic drive

The Sivoia QED™ system is low-voltage and operates at a near-silent level (rated at 44 dBA at three feet). Shades move smoothly and stop at preset positions with no audible clicks.

Intelligent hembar alignment™

All shades in a Sivoia QED system will track together and stop at programmable preset positions to within .125 inch. By utilizing a unique intelligent hembar alignment enhancement, Roller 64, Roller 100, and Roller 225 shade systems will move and track together, even though they use different size roller tubes.

Minimal, symmetrical light gaps

Sivoia QED roller shade systems offer light gaps of .75 inch per side.

Simple reconfiguration

The Sivoia QED system can easily be reconfigured, limits can be changed, and presets can be reprogrammed without rewiring by accessing the remote, keypad, or electronic drive unit (EDU).

Limits and presets never lost

Limits and preset shade positions are electronically precision-set and locked into a 10-year power-failure memory. These limits and presets will never slip regardless of age, electrostatic discharge, or power failure.

Simplified wiring

Sivoia QED shading systems do not require any group controllers, relays, or line-voltage wiring between electronic drive units. Wiring can be simplified by using an optional Sivoia QED power panel, allowing all system wiring to be run to one convenient location.

Built-in infrared capability

All Sivoia QED systems ship from the factory ready to receive infrared control signals.

Elegant control options

Lutron controls are designed to match the high-end look and feel of today's premiere working and living spaces and are available in a wide variety of colors and finishes, including metals.

Wide array of fabrics

Lutron shading systems are available in fabric styles to suit any function or aesthetic need, including many PVC-free fabric choices.

Total light control

Lutron lighting control systems integrate with Sivoia QED shades, offering intuitive control of both electric light and daylight.



Sustainable design and LEED™

Lutron shading and lighting controls may contribute to obtaining up to 22 points in 5 of 6 LEED credit categories.

System warranty and support

Sivoia QED systems come with an 8-year limited warranty, plus optional extended service. Lutron has factory-employed field service engineers throughout the world and is the only lighting control or shade systems manufacturer in the world with a 24-hour / 7 days a week technical support center.

It's done! Smart Home
Time House
56b Crewys Road
London NW2 2AD
tel.: 0845 060 5566
www.itsdone-smarhome.co.uk



It's done!
Smart Home